



100<sup>th</sup> ANNUAL

## BAYVIEW YACHT CLUB

# Frank Kern III Memorial Long Distance Race

Saturday, September 15, 2018

### Sailing Instructions

1. **RULES** - This Regatta shall be governed by the “rules” as defined in The Racing Rules of Sailing for 2017 - 2020. The Organizing Authority for this Regatta is the Bayview Yacht Club (BYC)

**Entry** – Participation in this regatta is open to all potential competitors. Competitors must participate using **Keelboats** owned by clubs, or club members, holding current membership in the Detroit Regional Yacht-Racing Association (DRYA) and to others on invitation of the Bayview Yacht Club Race Chairman. Any competitors not registered for the 2018 DRYA “Counter” Series (e.g. PJAM), 2018 DRYA “Counter” Series boats not racing in their assigned class start, or GUEST boats by BYC must register with DRYA (link available at [www.drya.org](http://www.drya.org) home page top right “Register for DRYA Counter Races”) or [www.bit.ly/RegisterDRYArace](http://www.bit.ly/RegisterDRYArace) ) and needs to be done by Tuesday before the race. Refer to DRYA NOR and SIs. Boats not registered will not be scored. Competitors are **not** required to pay any non-DRYA registration fees prior to the start of the race.

2. **AGREEMENT TO ASSUME RISK** - In consideration of being permitted to enter this regatta and being fully knowledgeable of the risks of sailing as a competitive sport, all competitors, crew members and guests aboard voluntarily assume all risks associated with participating in this regatta. The skipper must assure that all equipment required by the United States Coast Guard (USCG) or by Sailing Instruction 4 is aboard and properly maintained and stowed and

that the crew knows where it is kept and how it is used.

**3. INTERFERENCE WITH COMMERCIAL SHIPPING – Boats are required to stay clear of all Commercial Shipping Traffic, including Tug/Barge Combinations, Lakers and Commercial Passenger Vessels.**

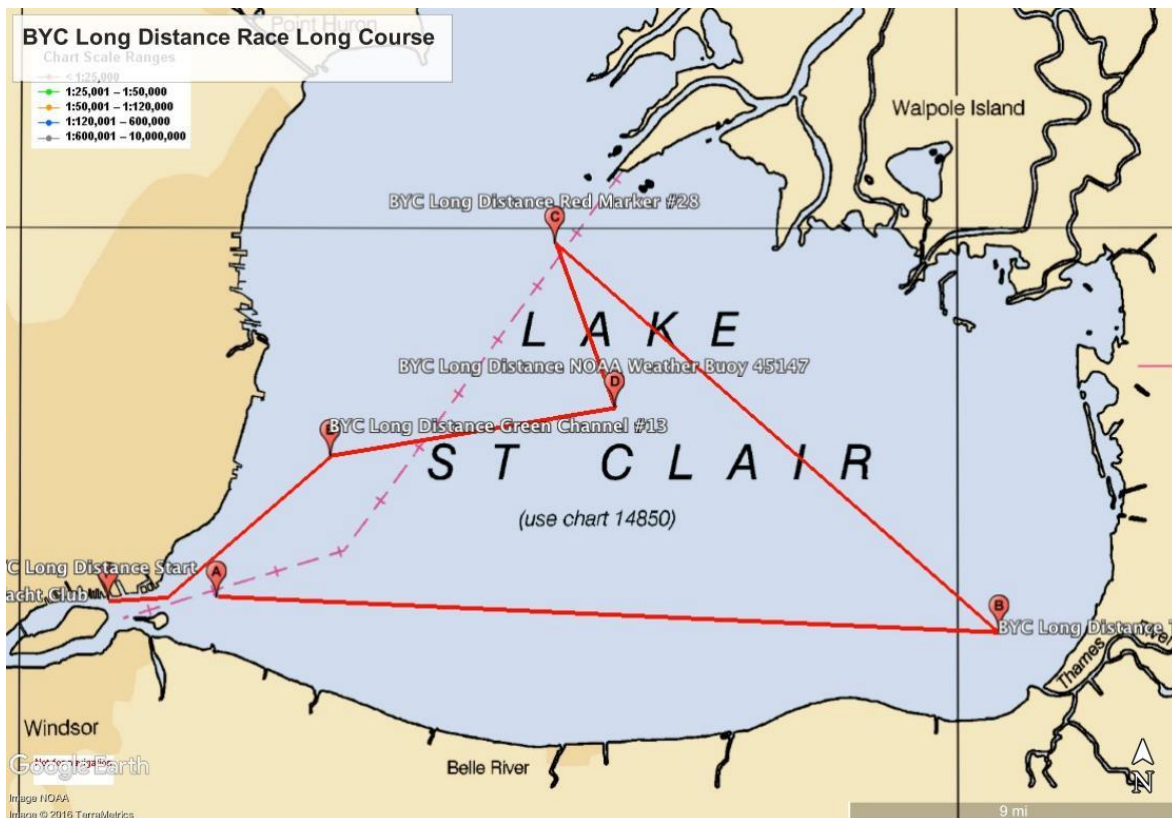
In addition, boats crossing the shipping channel (see U.S. Chart #14850), boats are forbidden to interfere with major ships (Federal law 89-764). No restriction is placed on use of the water by other parties. Competitors therefore shall adhere to USCG Rule 18, which reads in part: “(b) A sailing vessel underway shall keep out of the way of: ... (ii) a vessel restricted in her ability to maneuver.

**4. IDENTIFICATION** - Class flags as prescribed below (not smaller than size “0”) shall be displayed from the aftermost backstay at least six feet above the deck. Boats in the Crescent, Cal 25 and Express 27 classes are not required to display class identification flags.

5. **COURSE & MARKS-** There will be two (2) courses for this regatta. Division 1 will be the Long Course, and Division 2 will be a Short Course. Coordinates for all marks listed are approximate locations.

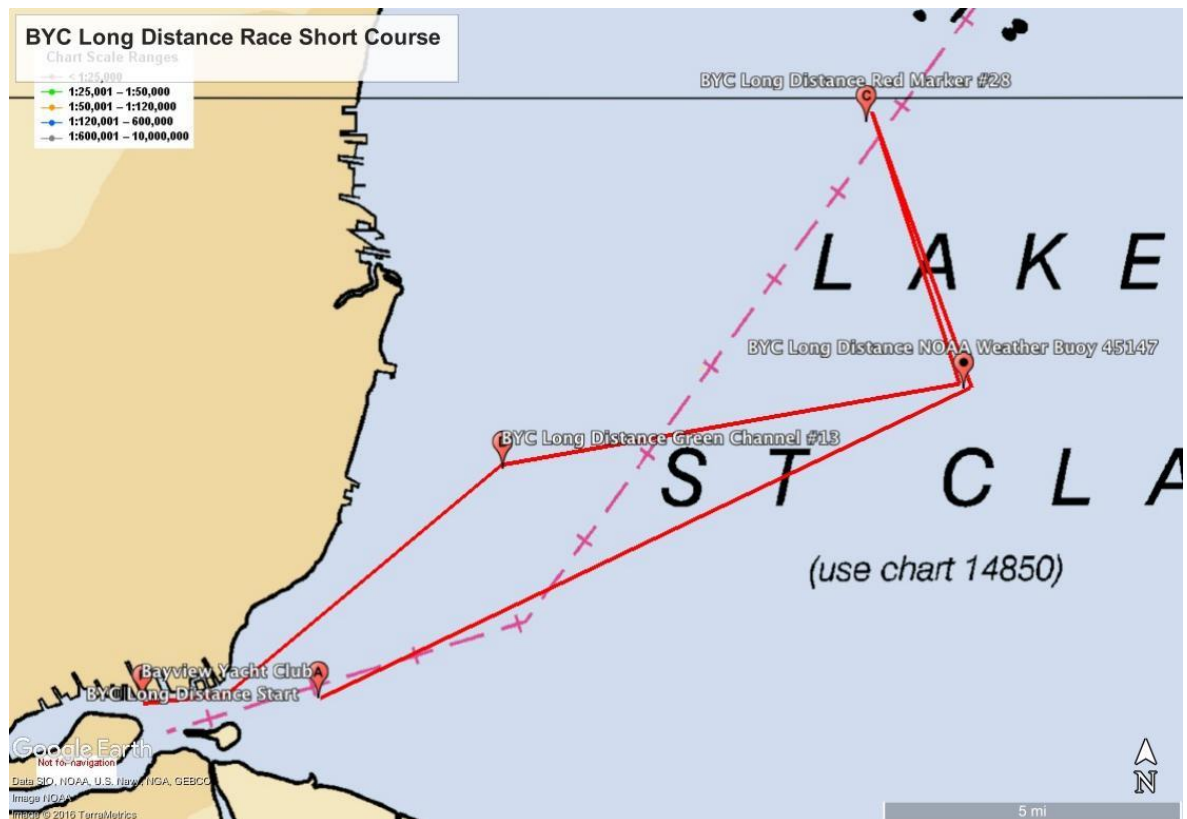
**DIVISION I – LONG COURSE (50.1 Nautical Miles)** - The course shall be from the starting line to:

- o **Mark 1:** TX Red Thames River Entrance Buoy (42° 20.408' N 082° 28.098' W)
  - left to port
- o **Mark 2:** Red Channel Marker #28 (42° 29.681' N 82° 42.894' W) left to port
- o **Mark 3:** Yellow Weather Buoy #45147 (42° 25.80' N 82° 40.98' W) left to
  - starboard
- o **Mark 4:** Green Channel Marker #13 (42° 24.648' N 082° 50.071' W) left to port
- o **Mark 5:** Rear Peche Island Range Light left to port
- o **Finish:** ~50 yards directly in front of Bayview Yacht Club



**DIVISION II – SHORT COURSE (31.3 NM)** - The course shall be from the starting line to:

- o **Mark 1:** Yellow Weather Buoy #45147 (42° 25.80' N 82° 40.98' W) left to port
- o **Mark 2:** Red Channel Marker #28 (42° 29.681' N 82° 42.894' W) left to port.
- o **Mark 3:** Yellow Weather Buoy #45147 (42° 25.795' N 82° 40.986' W) left to
  - starboard.
- o **Mark 4:** Green Channel Marker #13 (42° 24.648' N 82° 50.071' W) left to port.
- o **Mark 5:** Rear Peche Island Range Light to port.
- o **Finish:** ~50 yards directly in front of Bayview Yacht Club



(Boats should give both Peche Island Range Lights ample room because of unmarked underwater obstructions.)

**SHORTENING COURSE** – There is no provision for Shortening Course.

6. **STARTING LINE** – The starting area shall be approximately 82° (90 Magnetic), 1.0nm from the Peche Is. Rear Range Light (42° 21.3' - 082° 53.7'). The starting line shall be between the staff displaying an orange flag or shape on a Race Committee boat at the starboard end of the line and the water's edge of an inflated orange pyramid buoy at the port end.
7. **STARTING TIMES** – Races will be started using RRS 26 (5 Minute Sequence), and the class flags designated in this Sailing Instruction. The warning signal for the first class will be made at **1500 HOURS (3pm)**.

**DIVISION 1 - LONG COURSE (50.1 NM)**

Start # / Class	Rating	Class Flag
1 / C&C 35		#0
2 / PHRF 3	100-150	#1
3 / PHRF 2	60-99	F
4 / Warhorse	99 & Lower	W
5 / Ben 36.7		K
6 / J120		#8
7 / PHRF 1	59 & Lower	#7
8/ GL70		#9

**DIVISION 2 - SHORT COURSE (31.3 NM)**

9 / PRFASM	60-300	E
10 / Express 27		Class Logo*
11 / Crescents		Class Logo*
12 / Cal 25		Class Logo*
13 / PHRF 4	151 & Higher	2nd Substitute

\*Black class logo on a white field

8. **FINISHING LINE** - The finishing line shall be between the Race Committee finish line shore station on the Bayview Yacht Club balcony and an orange tetrahedron with a white flashing light. ***The Race Committee requests that competitors have reflective sail numbers displayed on the starboard lifelines where they will not be obstructed by overlapping headsails.*** Sails and reflective numbers should be kept up well after finishing insuring proper identification.

**9. LIMIT MARKS** - One or more limit marks (buoy with red and green horizontal bands) may be set near the Race Committee boat at the starting line. A boat shall not hit a limit mark or the Race Committee boat or pass between any of them. A boat that does so may exonerate herself by taking a One-Turn Penalty described in RRS 44.2.

**10. RC COMMUNICATIONS**- Boats shall monitor VHF Channel 72 from the warning signal for the first class until after they have retired or finished. Any flag referred to in these Sailing Instructions may be replaced by a cylindrical shape that resembles the flag it replaces.

**BOATS RETIRING**- Boats retiring from the race shall inform the Race Committee as soon as possible on VHF Channel 72 or by telephoning the Race Committee at (313) 822-9595.

**11. PROTESTS** - Protests shall be delivered by email to [Protests@DRYA.org](mailto:Protests@DRYA.org) no later than 1900 hours on the day of the regatta or two hours after the last boat in the protesting boat's class finishes the last race of the day, whichever is later. Fill-in protest forms and filing instructions are available at DRYA.org. Protest hearings will be held at Bayview Yacht Club, 100 Clairpointe, Detroit, MI beginning at 7:00 pm on Monday, September 17.  
[http://drya.org/race2018/DRYAProtest\\_Filing\\_Instructions\\_2018.pdf](http://drya.org/race2018/DRYAProtest_Filing_Instructions_2018.pdf)

**12. RACE SCORING**- DRYA will provide official race scoring. BYC requests competitors also register their intent to race on Yacht Scoring at no additional cost by Sept 14<sup>th</sup> <https://yachtscoring.com/emenu.cfm?elD=4117>  
Yacht Scoring will be available for use by all competitors as an unofficial information resource.

**13. AWARDS** – There will be an Overall Winner for each course and 1<sup>st</sup>, 2<sup>nd</sup>, and 3<sup>rd</sup> awards for each class. Awards will be presented as follows at the Long Distance Race / North Channel Race Awards Ceremony at Bayview Yacht Club (*Saturday November 3<sup>th</sup>, 2018*). Skippers and crew are welcome to enjoy dinner at Bayview Yacht Club prior to the Awards Ceremony.